



Let us share our
expertise with you



Motorized screens **Homevision I**



Motorized screens **Homevision 1**

From 160 to 300 cm

New housing combining stylish design and reliability.

- Compact white RAL 9010 housing
- Silent motor system
- Easy to install

Homevision is an electric screen whose features, high quality standard, silent system of fabric dragging and versatility under different projection conditions, make it the right solution for small to medium size rooms.

The wide range of fabrics available satisfy almost all the various projection needs.

The Homevision electric roll screen is an excellent solution for private screenings or large audiences.

Available with 5cm black surrounding borders and top drop of 30 cm, or without black borders and also in tensioned version (tab-tension).



Tab-tension optional

Motorized screens Homevision 1

Technical specifications :

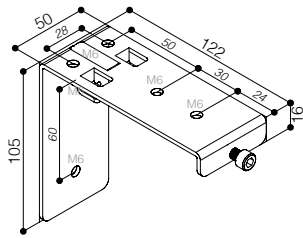
- Silent motor system provides a smooth and quiet operation
- Power: 6 Nm
- Speed: 17 rpm
- Power supply: 230V / 50 Hz
- Consumption: 137W
- Certification: IMQ
- Totally manufactured with aluminium housing and steel side plates
- Housing dimensions: 94 x 112 mm. (DxH)
- Housing painted with white epoxy powders (RAL 9005)
- Switcher on/off/stop included
- Ceiling and wall mounting brackets included
- Flame retardant projection surfaces - classification M1 and B1
- Hour-shape glass tensioning system to provide perfect flatness
- Screen housing available in black RAL 9005 colour (optional)
- Power cable located at right side of the screen housing seen from the front

Available fabrics: Cinecitta 240, Cinecitta supermicroperforated, Retro Cream, Infra, Cinopaque HC, Highcontrast, Highcontrast supermicroperforated, Woven sound fabric.

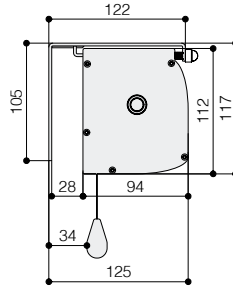
Homevision I - white housing + white sidecaps								Tensioned	
Viewing sizes (cm) (W x H)				Black Borders 5 cm with black top drop of 30 cm Black weighting bar		No borders White weighting bar		Black Borders 5 cm with black top drop of 30 cm Black weighting bar	
1 :1 (only without borders and not tensioned)	4 :3	16 :9	16 :10	Length housing	Approx. weight	Length housing	Approx weight	Length housing	Approx. weight
160x160	160x120	160x90	160x100	179	15	169	14	198	15
180x180	180x135	180x101	180x112	199	16	189	15	218	17
200x200	200x150	200x112	200x125	219	18	209	17	238	19
220x220	220x165	220x124	220x137	239	20	229	19	258	20
250x250	250x190	250x140	250x156	269	23	259	22	288	22
	300x225	300x169	300x187	319	26	309	25		

Technical details

WALL-CEILING BRACKET



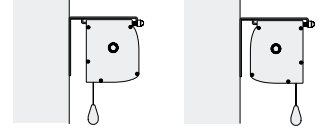
HOUSING DIMENSIONS



**DROP OF
PROJECTION
CLOTH
STANDARD**

**FRONT DROP OF
PROJECTION
CLOTH
(optional)**

WALL MOUNTING



CEILING MOUNTING

