



Let us share our
expertise with you



Motorized screens **Homevision II**



Motorized screens

Homevision II

From 300 to 450 cm

New housing combining stylish design and reliability.

- Black RAL 9005 housing
- Silent motor system
- Easy to install

Homevision is an electric screen whose features, high quality standard, silent system of fabric dragging and versatility under different projection conditions, make it the right solution for small to medium size rooms.

The wide range of fabrics available satisfy almost all the various projection needs.

The Homevision electric roll screen is an excellent solution for private screenings or large audiences.

Available with 5cm black surrounding borders and top drop of 30 cm, or without black borders and also in tensioned version (tab-tension).



Tab-tension optional

Technical specifications :

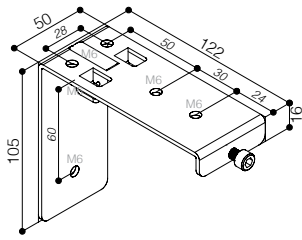
- Silent motor system provides a smooth and quiet operation
 - Power: 10 Nm
 - Speed: 17 rpm
 - Power supply: 230V / 50 Hz
 - Consumption: 156W
 - Certification: IMQ
 - Totally manufactured with aluminium housing and steel side plates
 - Housing dimensions: 124x133 mm. (DxH)
 - Housing painted with black epoxy powders (RAL 9005)
 - Switcher on/off/stop included
 - Ceiling and wall mounting
- brackets included
 - Flame retardant projection surfaces - classification M1 and B1
 - Hour-shape glass tensioning system to provide perfect flatness
 - Screen housing available in other colours (optional)
 - Power cable located at right side of the screen housing seen from the front

Available fabrics: Cinecitta 240, Cinecitta supermicroperforated, Retro Cream, Infra, Cinopaque HC, Highcontrast, Highcontrast supermicroperforated, Woven sound fabric.

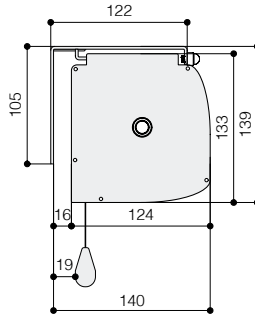
HomeVision II - Black Housing + black side caps								Tensioned	
Viewing sizes (cm) (W x H)				Black Borders 5 cm with black top drop of 30 cm Black weighting bar		No borders White weighting bar		Black Borders 5 cm with black top drop of 30 cm Black weighting bar	
1:1 (only without borders and not tensioned)	4:3	16:9	16:10	Length housing	Approx. weight	Length housing	Approx. weight	Length housing	Approx. weight
	300 x 225	300 x 169	300 x 187	N/A		N/A		340	27
300 x 300				N/A		311	25	N/A	
350 x 350	350 x 265	350 x 197	350 x 219	371	29	361	28	390	32
400 x 400	400 x 300	400 x 225	400 x 250	421	34	411	33	440	36
	450 x 340	450 x 253	450 x 281	471	39	461	37	N/A	

Sizes

WALL-CEILING BRACKET



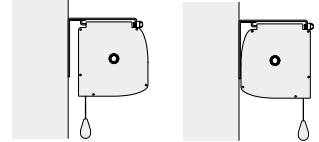
HOUSING DIMENSIONS



**DROP OF
PROJECTON
CLOTH
STANDARD**

**FRONT DROP OF
PROJECTON
CLOTH
(optional)**

WALL MOUNTING



CEILING MOUNTING

